

# Installation Guide

## 1500 Retrofit Kit

Document part number 65367R0

Kennedy Technology Group

4000 W. 6th St. #271

Lawrence KS 66049

785-505-0242

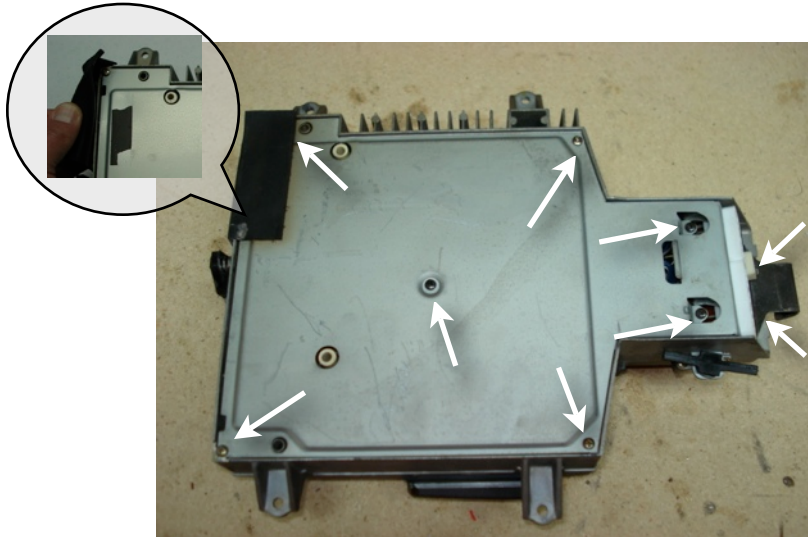
[kennedy@cellset.com](mailto:kennedy@cellset.com)

Thank you for purchasing our product. We hope it provides years of reliable and pleasurable service.

***Do not perform this installation if you are colorblind!***

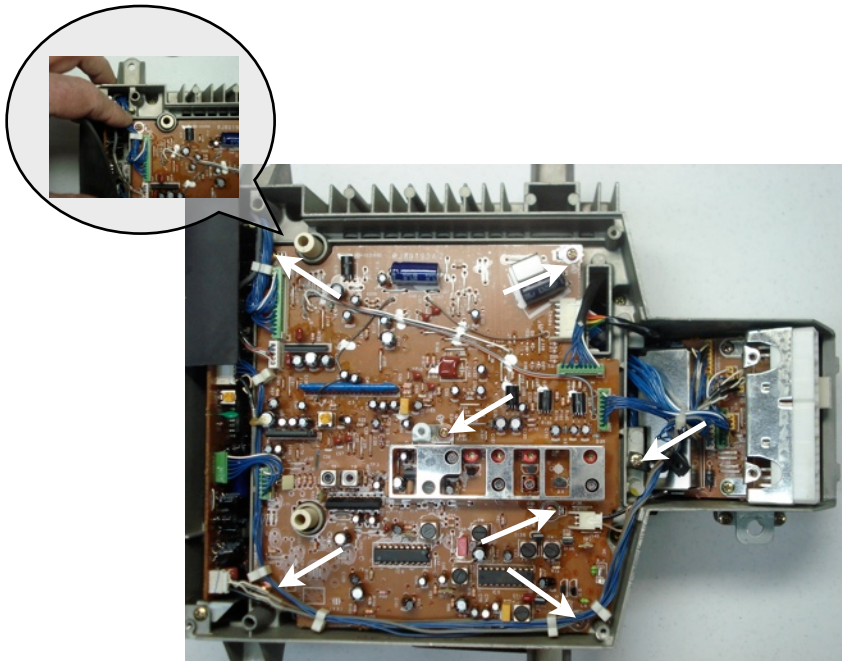
### Tools Required:

- Small Phillips head screw driver
- Small blade screwdriver
- Needle nose pliers
- Wire stripper
- Diagonal cutters
- Soldering iron - 15W
- Solder, electronics grade
- Solder pump or solder braid
- Well lit and clutter-free workspace
- Optional
  - Metal nibbler
  - Variable, current limiting power supply
  - Stereo headphones
  - Alligator test leads



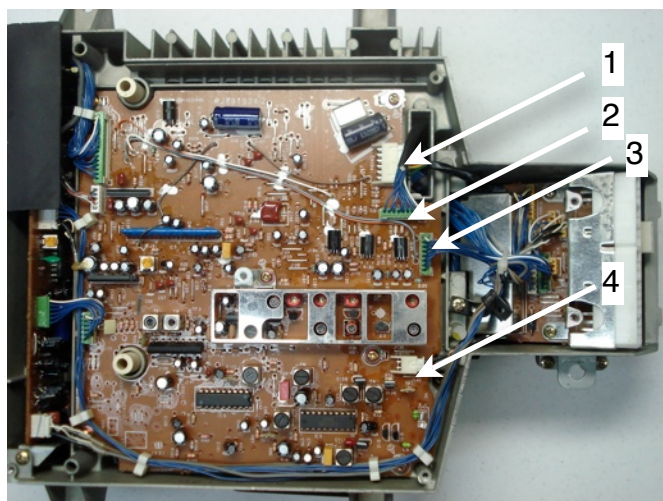
**-1-**

Remove the screws from the bottom cover. You may need to peel back the rubber cushion as shown in the inset.



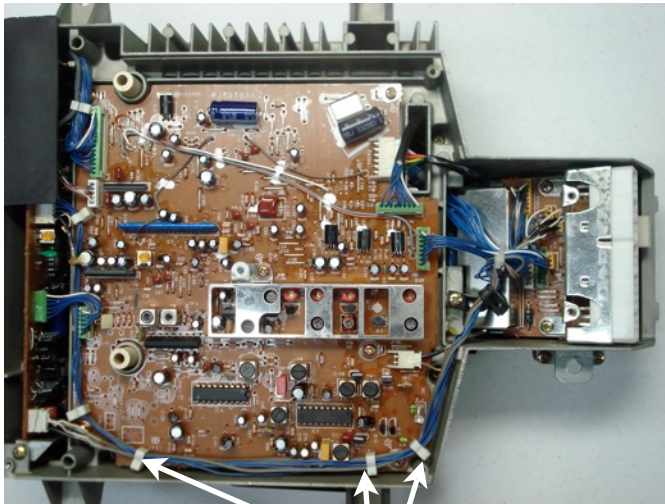
**-2-**

Remove the screws from the PCB. You may need to move the wires as shown in inset.



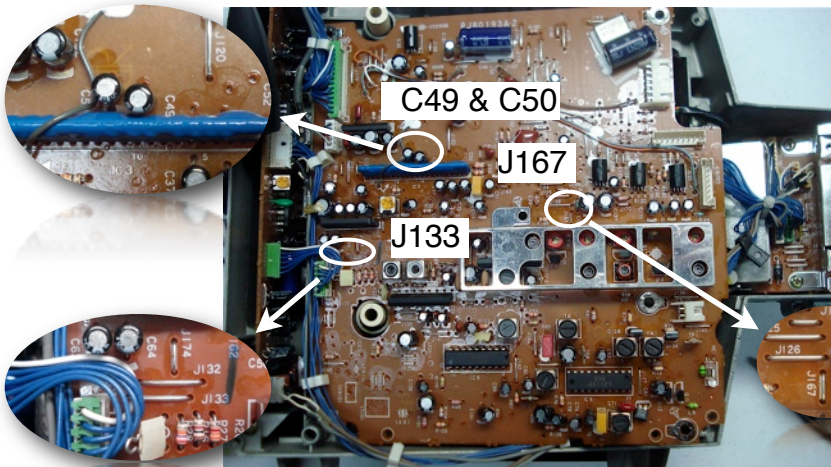
**-3-**

Unplug the 4 connectors from the PCB where indicated.



**-4-**

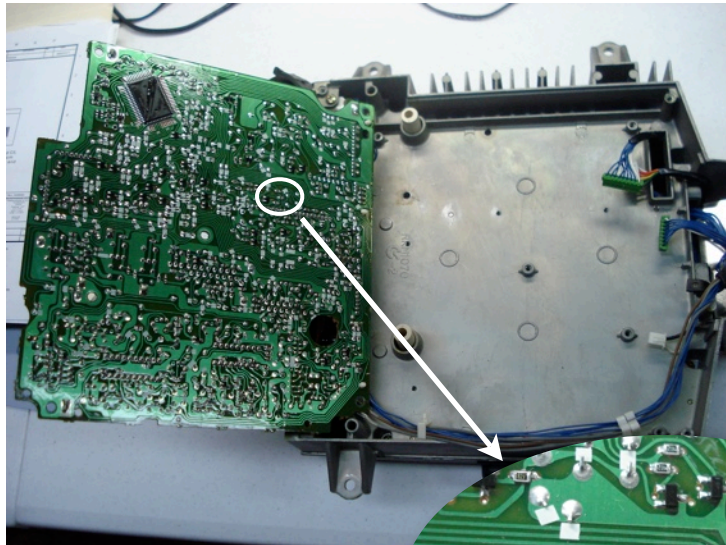
Remove the 3 cable retaining clips where indicated. Pinch the retaining tabs as shown.



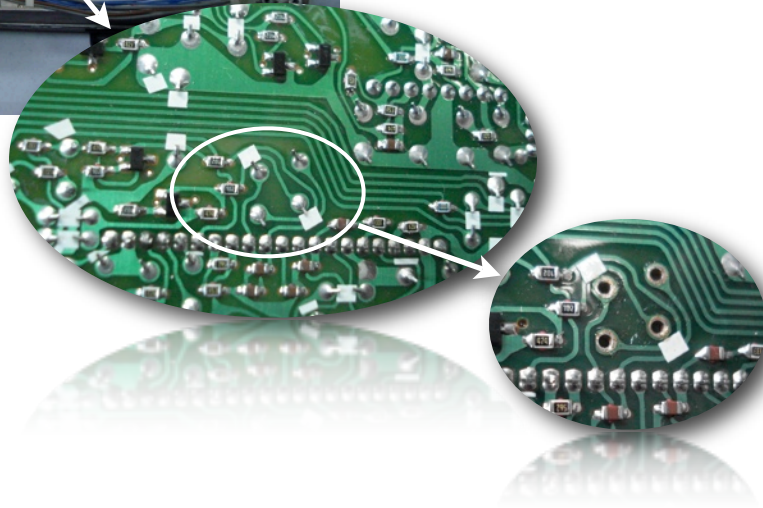
**-5-**

Locate the retrofit circuit attachment points

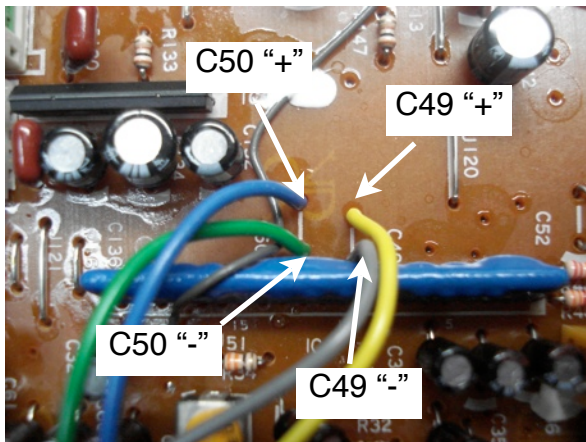
**-6-**



Flip the PCB over. Locate C49 and C50 leads. Remove the solder as shown in the last expanded view. Remove C49 and C50.



**-7-**



Flip the PCB over. Connect the wires from the retrofit PCB as shown:

- Blue to C50 "+"
- Green to C50 "-"
- Yellow to C49 "+"
- Gray to C49 "-"

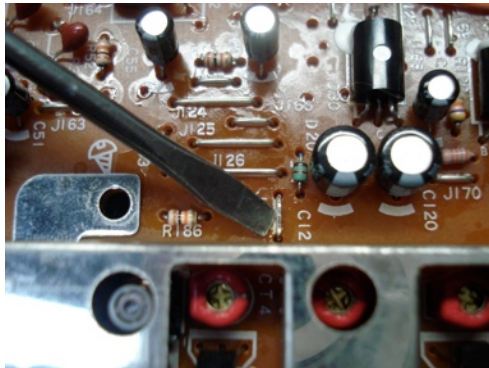
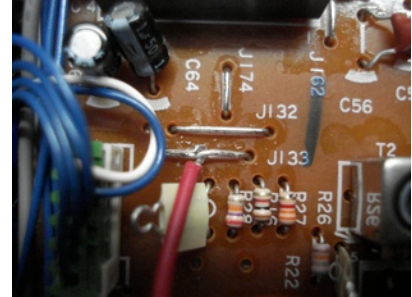
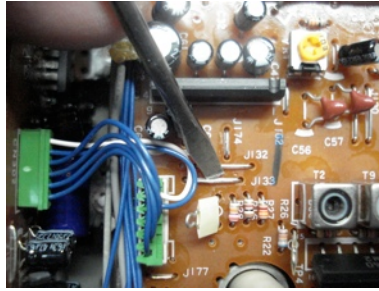
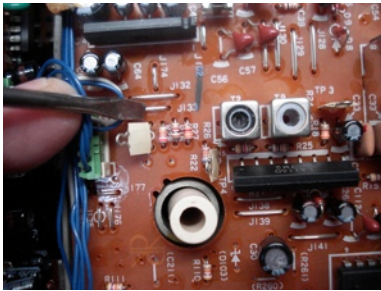
## -8-

Locate J133:

Scrape off any coating...

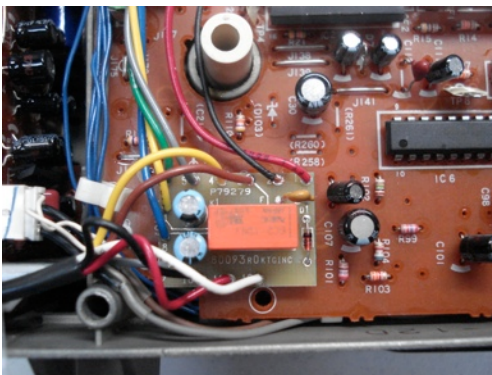
Lift jumper off board...

and solder retrofit pcb  
Red wire to it



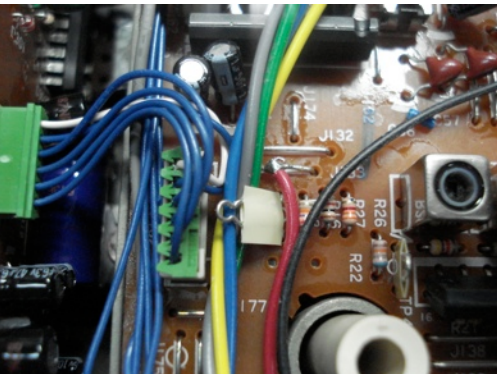
## -9-

Locate J167. Scrape, lift and solder  
retrofit PCB Black wire to it.



## -10-

Place retrofit PCB on radio's PCB  
where shown. Attach using double  
sided adhesive tape.



## -11-

Route retrofit PCB wires as shown



## -12-

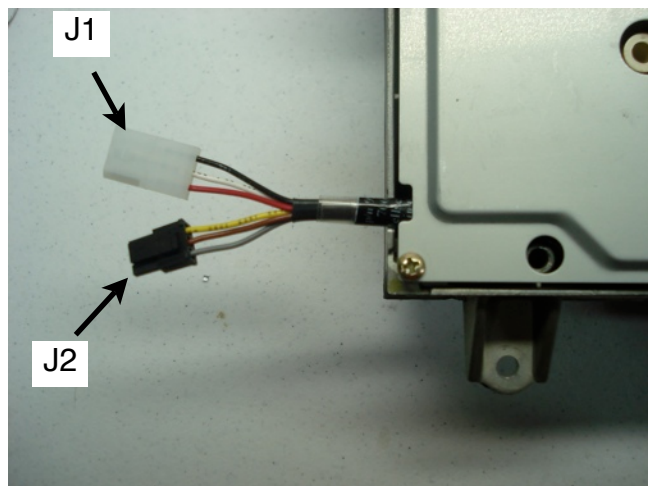
### Optional

Use a metal nibbler to cut a notch in the chassis. This is not required, but if it is not done, there will be a bulge in the radio's bottom cover.

## -13-

### Reassembly Notes

- Make certain all wires and cables are properly routed in the cable retaining clips
- Reattach each connector previously removed
- Test circuit (optional - see last page)
- Replace PCB screws. Be careful to not pinch any wires between a screw's flat washer and the PCB
- Replace retaining clips
- Route retrofit pigtails out of the radio chassis and reattach bottom cover plate



Connect J1 to the Kennedy Switch assembly you installed.

Connect J2 to the Kennedy Audio harness you installed.

# Test Instructions

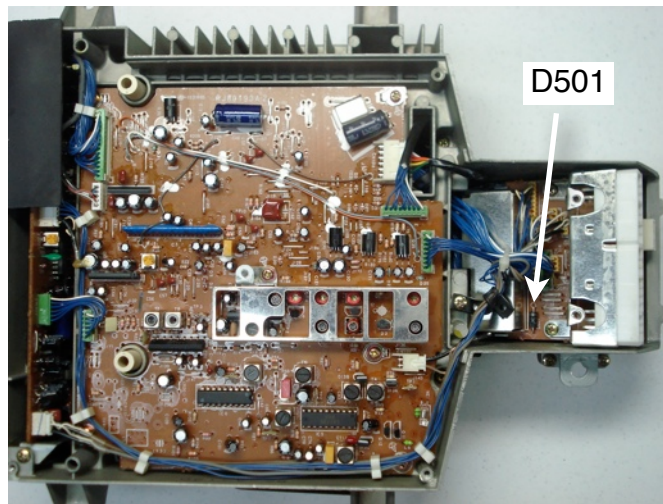
Connect J1 to the Kennedy Switch assembly you installed. (see step 13, above)

Connect J2 to the Kennedy Audio harness you installed.

Connect audio harness to an audio source.

Turn radio and intercom off

Connect a 12Vdc, current limited power supply with current display (set to 0.9Adc max) to radio. Connect negative to the radio chassis; connect positive to the cathode (banded side) of diode D501 (located on connector PCB).



Read approximately 0.32Adc with radio "off".

Turn radio "on" - Read 0.67Adc, (approximate).

Flip Kennedy Switch (or short white and black wire of Kennedy connector J1 together)

Listen for sound of relay on Kennedy retrofit PCB activating.

Connect stereo headset common to chassis ground

Connect left headphone to radio connector pin 16

Connect right headphone to radio connector pin 23

Kennedy switch closed - Aux audio source is heard

Kennedy switch open - Aux audio source is NOT heard

