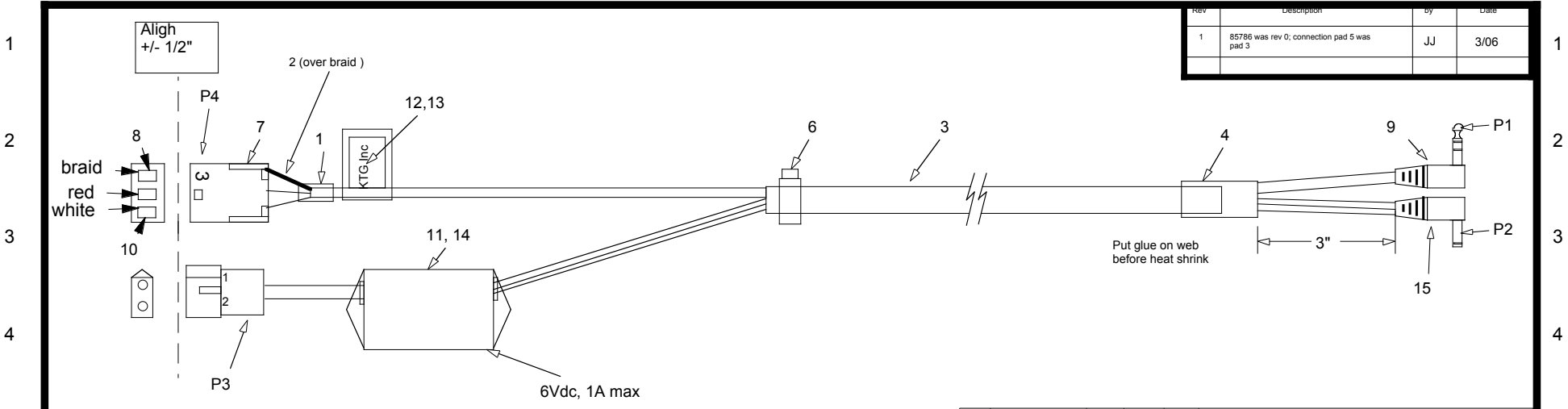
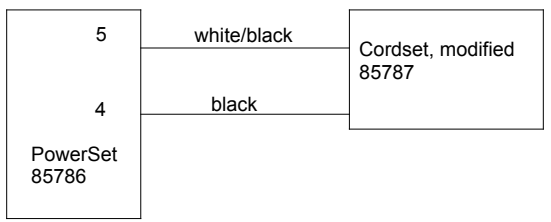


A B C D E F G H J K L M N P



Item	Part #	Rev	Qty	Unit	Description
15	85787	0	1	ea	Cordset, dc power, modified
14	85786	1	1	ea	Powerset-6V
13	85925	0	1	ea	Label, s/n and p/n
12	60049	0	1	ea	label, overlaminating, 1.25 x 3
11	55051	0	1	ea	Cover, for TF-1218TX, black
10	40152	0	2	ea	Terminal, Male, Micro-fit, gold, 26-30 AWG
9	40127	0	1	ea	Cordset, stereo, 3.5mm, Right angle, 72", black
8	40119	0	1	ea	Terminal, Male, Micro-fit, gold, 20-24 AWG
7	40116	0	1	ea	Plug Micro-fit, 3 circuit
6	30502	0	1	ea	Tie wrap, 4", Black
5	30200	0	0.2	mL	Adhesive
4	30071	0	1.5	in	Tubing, heat shrink, 5/16
3	30070	0	48	in	Sleeve, polyester, 1/4", black, non-fray
2	30049	0	1	in	Tubing, heat shrink, 1/16
1	30034	0	1	in	Tubing, heat shrink, 1/8"

CONNECTION DIAGRAM



THIS DRAWING IS THE PROPERTY OF THE KENNEDY TECHNOLOGY GROUP, ROSE HILL, KANSAS

Kennedy Technology

REFERENCE: XXXXXX Harness, SkyFi/Road2

UNLESS OTHERWISE SPECIFIED:
DIMENSIONS ARE IN INCHES
TOLERANCES
LINEAR
Fractional - 1/32"
0.0 ± 0.15
0.00 ± 0.015
0.000 ± 0.0015
ANGULAR
±0.5 DEG.

SIZE: B	CADFILE:	DWG NO.: 95373	REV NO.: 1	EFFECTIVE: sn:
SCALE: NONE		FOR ASSISTANCE CONTACT: vox 316-776-1111 fax 316-776-9035		DRAWN: DATE:
SHEET 1 OF 1				CHECKED: DATE:

A B C D E F G H J K L M N P