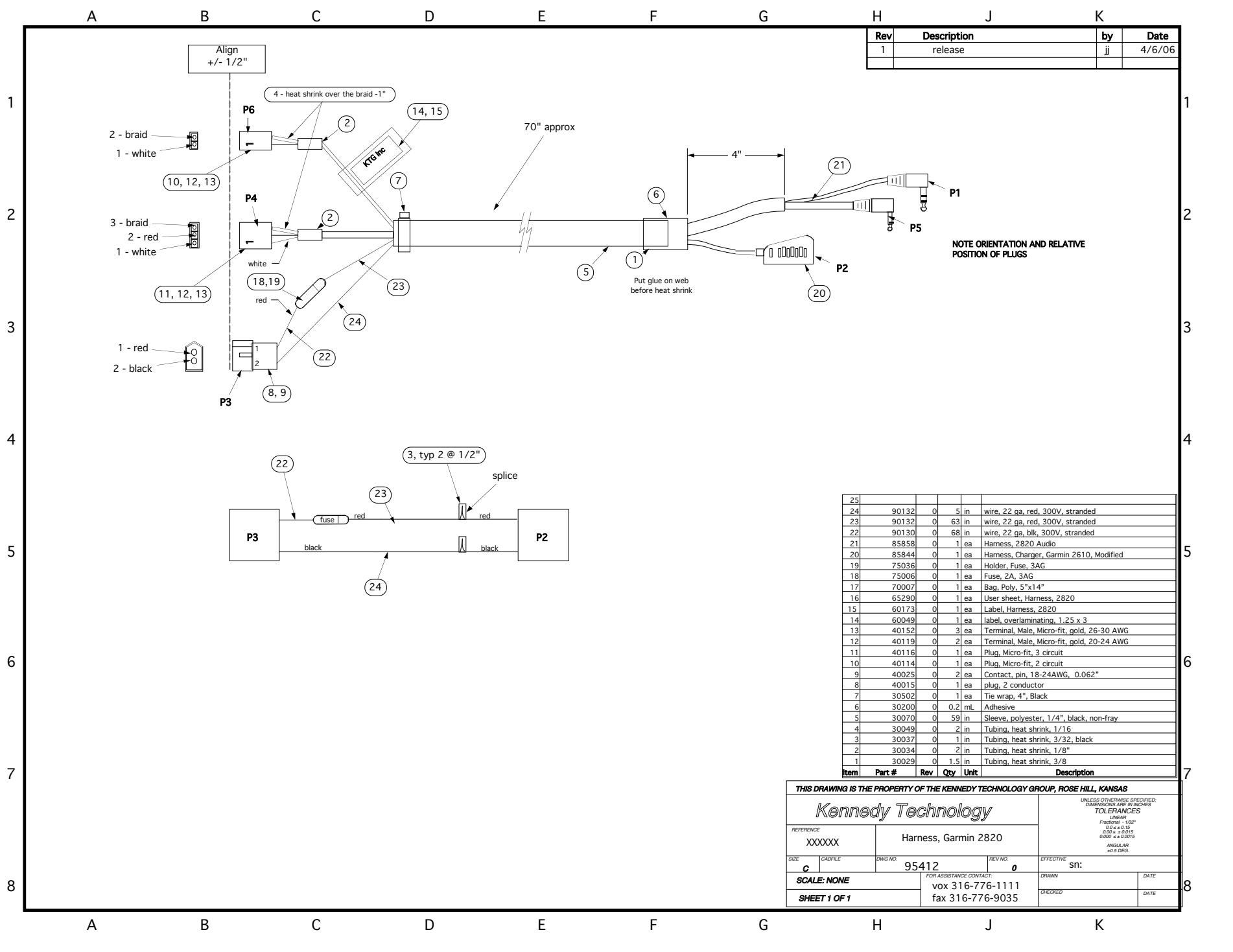


Rev	Description	by	Date
1	release	jj	4/6/06



NOTE ORIENTATION AND RELATIVE POSITION OF PLUGS

25					
24	90132	0	5	in	wire, 22 ga, red, 300V, stranded
23	90132	0	63	in	wire, 22 ga, red, 300V, stranded
22	90130	0	68	in	wire, 22 ga, blk, 300V, stranded
21	85858	0	1	ea	Harness, 2820 Audio
20	85844	0	1	ea	Harness, Charger, Garmin 2610, Modified
19	75036	0	1	ea	Holder, Fuse, 3AG
18	75006	0	1	ea	Fuse, 2A, 3AG
17	70007	0	1	ea	Bag, Poly, 5"x14"
16	65290	0	1	ea	User sheet, Harness, 2820
15	60173	0	1	ea	Label, Harness, 2820
14	60049	0	1	ea	label, overlaminating, 1.25 x 3
13	40152	0	3	ea	Terminal, Male, Micro-fit, gold, 26-30 AWG
12	40119	0	2	ea	Terminal, Male, Micro-fit, gold, 20-24 AWG
11	40116	0	1	ea	Plug, Micro-fit, 3 circuit
10	40114	0	1	ea	Plug, Micro-fit, 2 circuit
9	40025	0	2	ea	Contact, pin, 18-24AWG, 0.062"
8	40015	0	1	ea	plug, 2 conductor
7	30502	0	1	ea	Tie wrap, 4", Black
6	30200	0	0.2	mL	Adhesive
5	30070	0	59	in	Sleeve, polyester, 1/4", black, non-fray
4	30049	0	2	in	Tubing, heat shrink, 1/16
3	30037	0	1	in	Tubing, heat shrink, 3/32, black
2	30034	0	2	in	Tubing, heat shrink, 1/8"
1	30029	0	1.5	in	Tubing, heat shrink, 3/8

THIS DRAWING IS THE PROPERTY OF THE KENNEDY TECHNOLOGY GROUP, ROSE HILL, KANSAS

Kennedy Technology

UNLESS OTHERWISE SPECIFIED DIMENSIONS ARE IN INCHES
TOLERANCES
LINEAR
Fractional ± 1/32"
Decimal ± 0.015"
0.00 ± 0.015"
0.000 ± 0.0005"
ANGULAR
± 0.5 DEG.

REFERENCE: XXXXXX Harness, Garmin 2820

SIZE: C CADFILE: DWG NO: 95412 REV NO: 0 EFFECTIVE SN: DATE: DRAWN: CHECKED: DATE:

SCALE: NONE FOR ASSISTANCE CONTACT: SHEET 1 OF 1 vox 316-776-1111 fax 316-776-9035