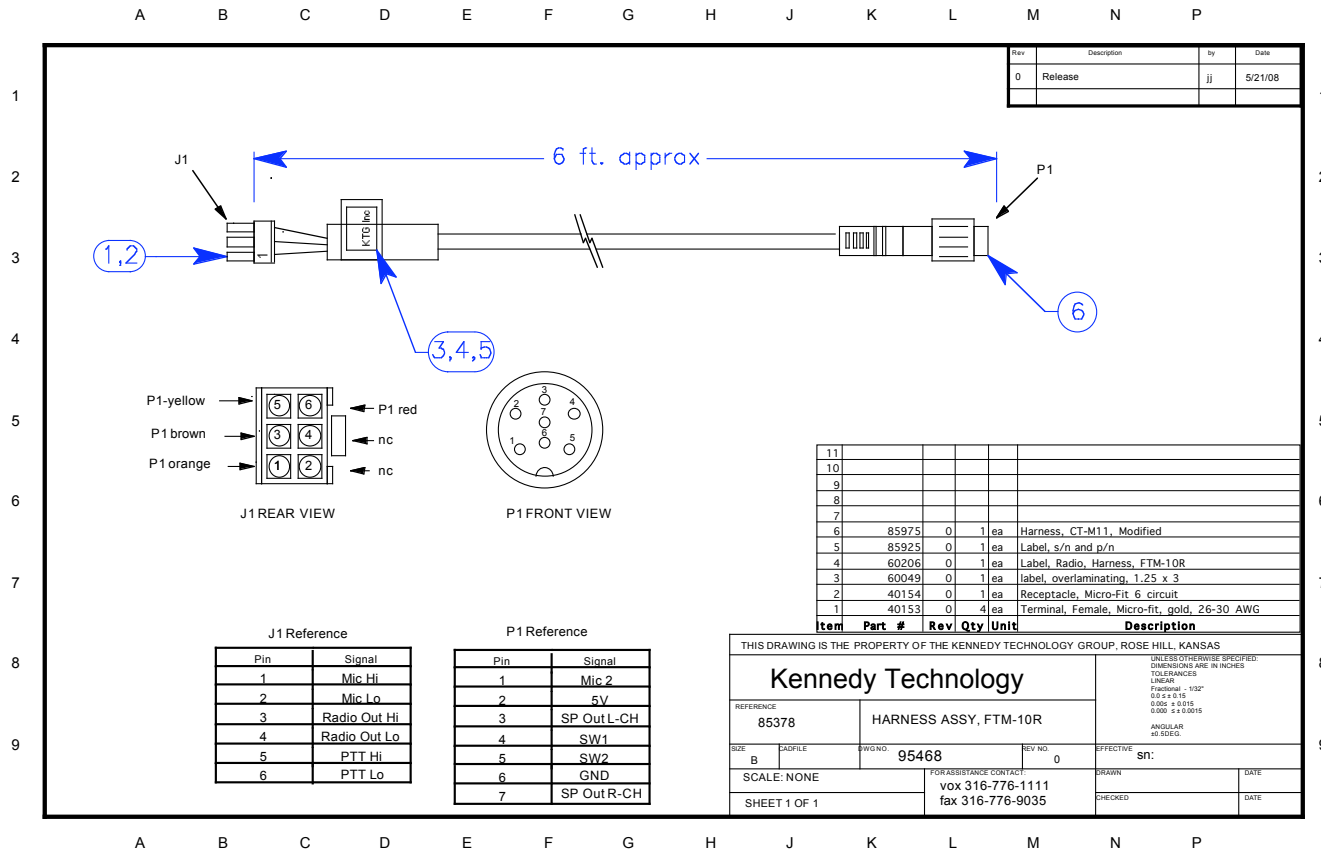


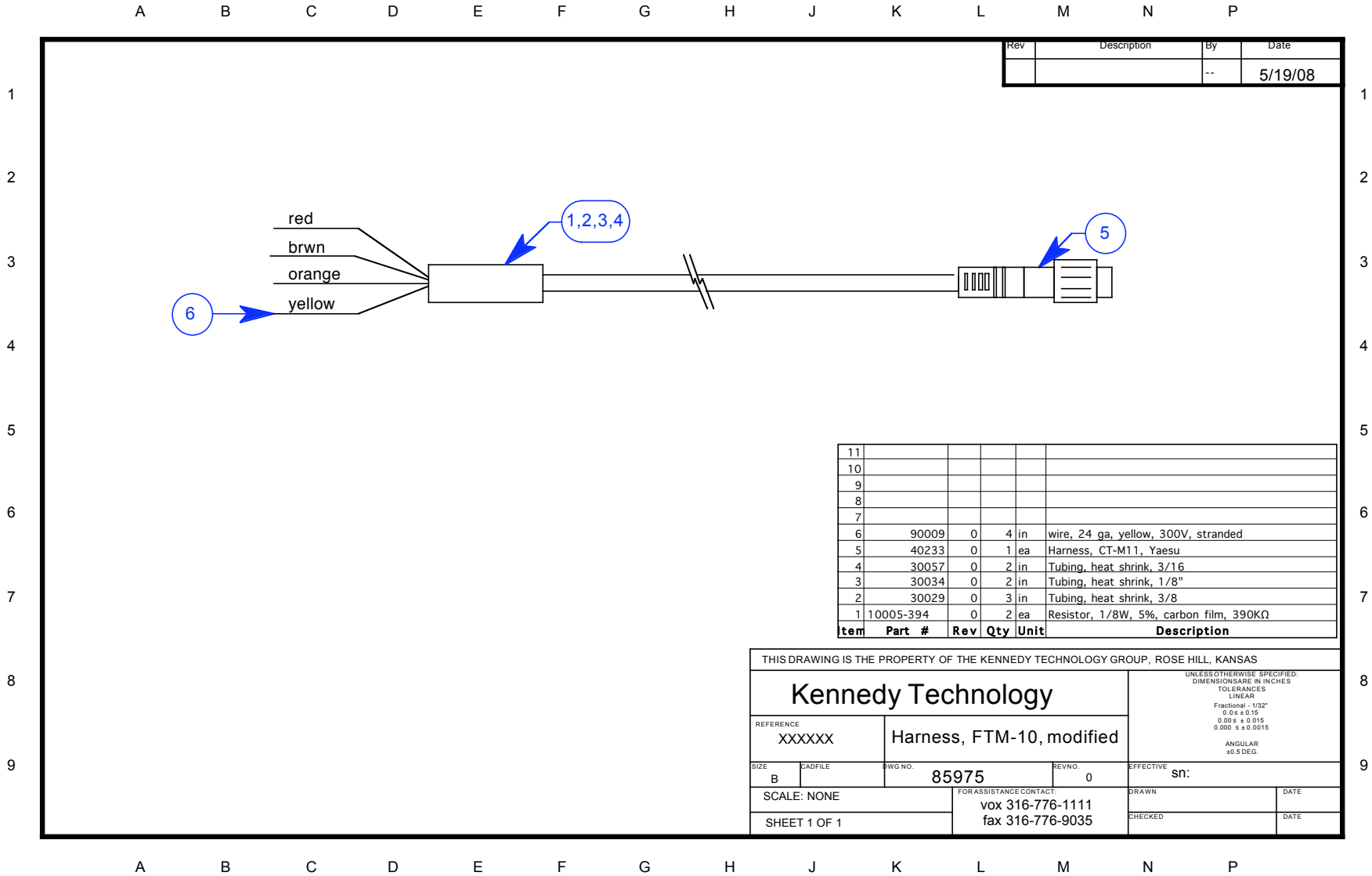
FTM-10R Construction notes. 65475R0

I designed this harness, but could not source the connector. So I offer the design to assist in its construction. The first drawing is the harness as I designed it.



This drawing is the property of Kennedy Technology Group, Inc. Information contained herein is not to be disclosed or used for commercial purposes without the expressed permission of said owner.

Here is item 6 in the drawing above;



Rev	Description	By	Date
--		--	5/19/08

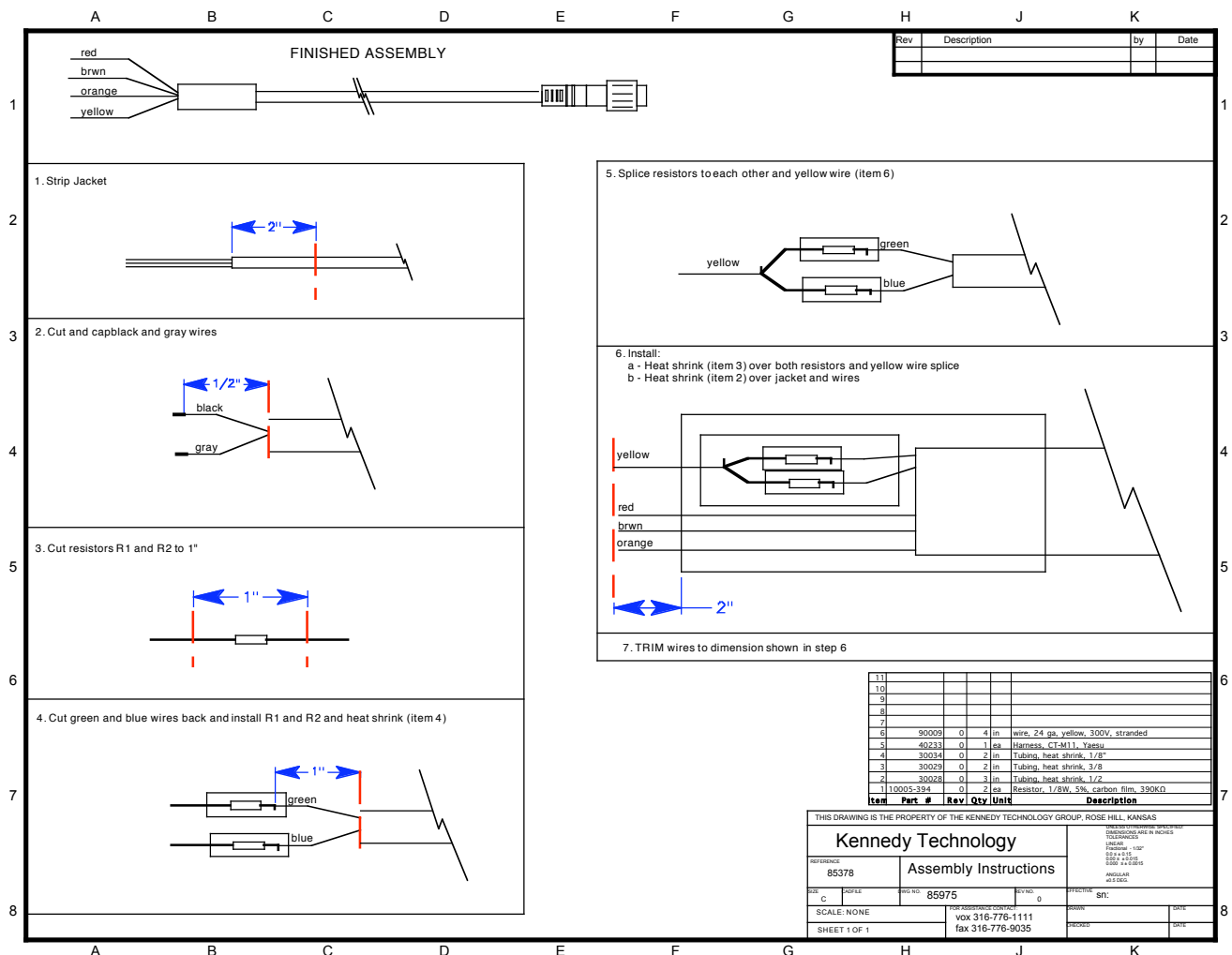
11					
10					
9					
8					
7					
6	90009	0	4	in	wire, 24 ga, yellow, 300V, stranded
5	40233	0	1	ea	Harness, CT-M11, Yaesu
4	30057	0	2	in	Tubing, heat shrink, 3/16
3	30034	0	2	in	Tubing, heat shrink, 1/8"
2	30029	0	3	in	Tubing, heat shrink, 3/8
1	10005-394	0	2	ea	Resistor, 1/8W, 5%, carbon film, 390KΩ
Item	Part #	Rev	Qty	Unit	Description

THIS DRAWING IS THE PROPERTY OF THE KENNEDY TECHNOLOGY GROUP, ROSE HILL, KANSAS

Kennedy Technology		<small>UNLESS OTHERWISE SPECIFIED: DIMENSIONS ARE IN INCHES TOLERANCES LINEAR Fractional - 1/32" 0.05 ± 0.15 0.005 ± 0.015 0.000 ± 0.0015 ANGULAR ±0.5 DEG.</small>	
REFERENCE XXXXXX	Harness, FTM-10, modified		
SIZE B	CADFILE	DWG NO. 85975	REVNO. 0
SCALE: NONE		FOR ASSISTANCE CONTACT: vox 316-776-1111 fax 316-776-9035	EFFECTIVE SN:
SHEET 1 OF 1		CHECKED	DATE

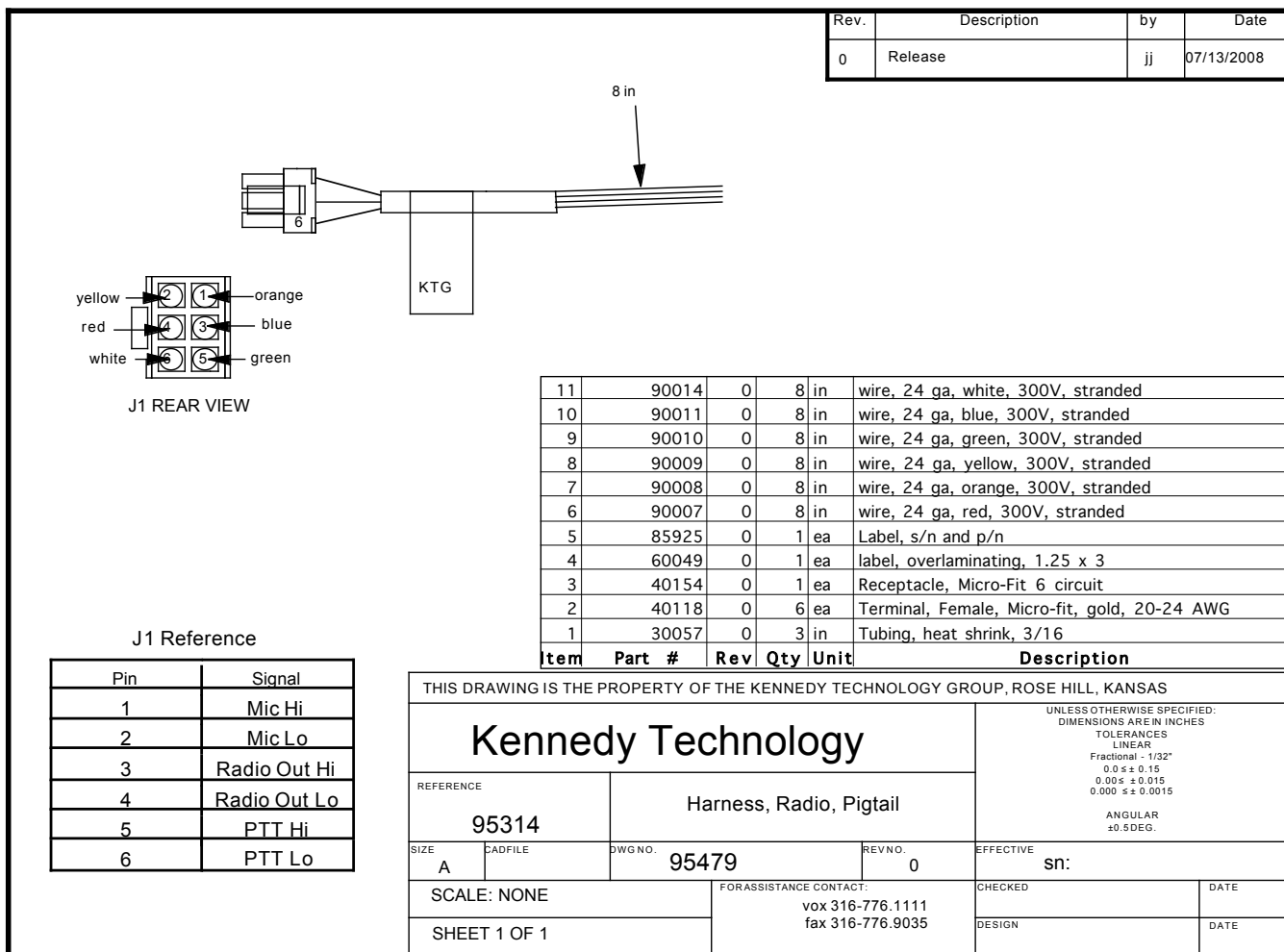
A B C D E F G H J K L M N P

Here is the modification procedure to produce the harness 85975. Use yellow wire where indicated, and 2 ea. 390k ohm, 1/8W resistors.



This drawing is the property of Kennedy Technology Group, Inc. Information contained herein is not to be disclosed or used for commercial purposes without the expressed permission of said owner.

Here is the KTG pigtail 95479, to which harness 85975 is connected. Splice colors are on the next page.



This drawing is the property of Kennedy Technology Group, Inc. Information contained herein is not to be disclosed or used for commercial purposes without the expressed permission of said owner.

Splicing the harnesses

Harness 85975	KTG pigtail 95479
Orange	Orange
Brown	Blue
Yellow	Green
Red	White

SWITCH SETTINGS

For Harley FRSet-SingleSet, 95294, set SW1, 1 to 4 "ON"

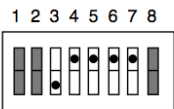
For FRSET4 95367R1

User Sheet Supplement

Radio Harness, FTM-10R, pn 95468

Document PN: 65388R0

Set the FRSet's Internal Switches 3 through 7 as shown in the figure below. For Switches 1, 2, and 8, refer to the FI User Sheet

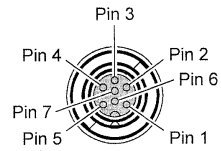


CT-M11 Connection Cable

The CT-M11 is a convenient cable for connecting after-market equipment to the 7-pin jack of the Yaesu FTM-10 series transceiver.

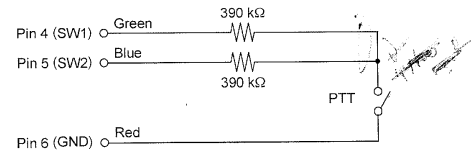
The wire color, jack pin-out, and function information is as follows:

Pin No.	WIRE COLOR	MIC JACK	CONTROL JACK	SP/LINE-IN JACK
1	Orange	MIC 2	MIC 1	LINE-IN L-CH
2	Gray	5 V	9 V	NC
3	Brown	SP OUT L-CH	SP OUT L-CH	SP OUT L-CH
4	Green	SW1	TXD	SP GND
5	Blue	SW2	RXD	LINE-IN R-CH
6	Red	GND	GND	LINE-IN GND
7	Black	SP OUT R-CH	SP OUT R-CH	SP OUT R-CH



(VIEWED FROM TRANSCEIVER'S REAR PANEL)

When connecting a PTT switch to the MIC Jack, assemble the components as shown in the diagram below.



VERTEX STANDARD CO., LTD.

